



CITY OF LE SUEUR
REQUEST FOR COUNCIL ACTION

TO: Mayor and City Council

FROM: Newell Krogmann, City Council Member and MMPA Representative for Le Sueur
Richard Kucera, Public Services Director

SUBJECT: Wind Turbine Relocation Resolution Request

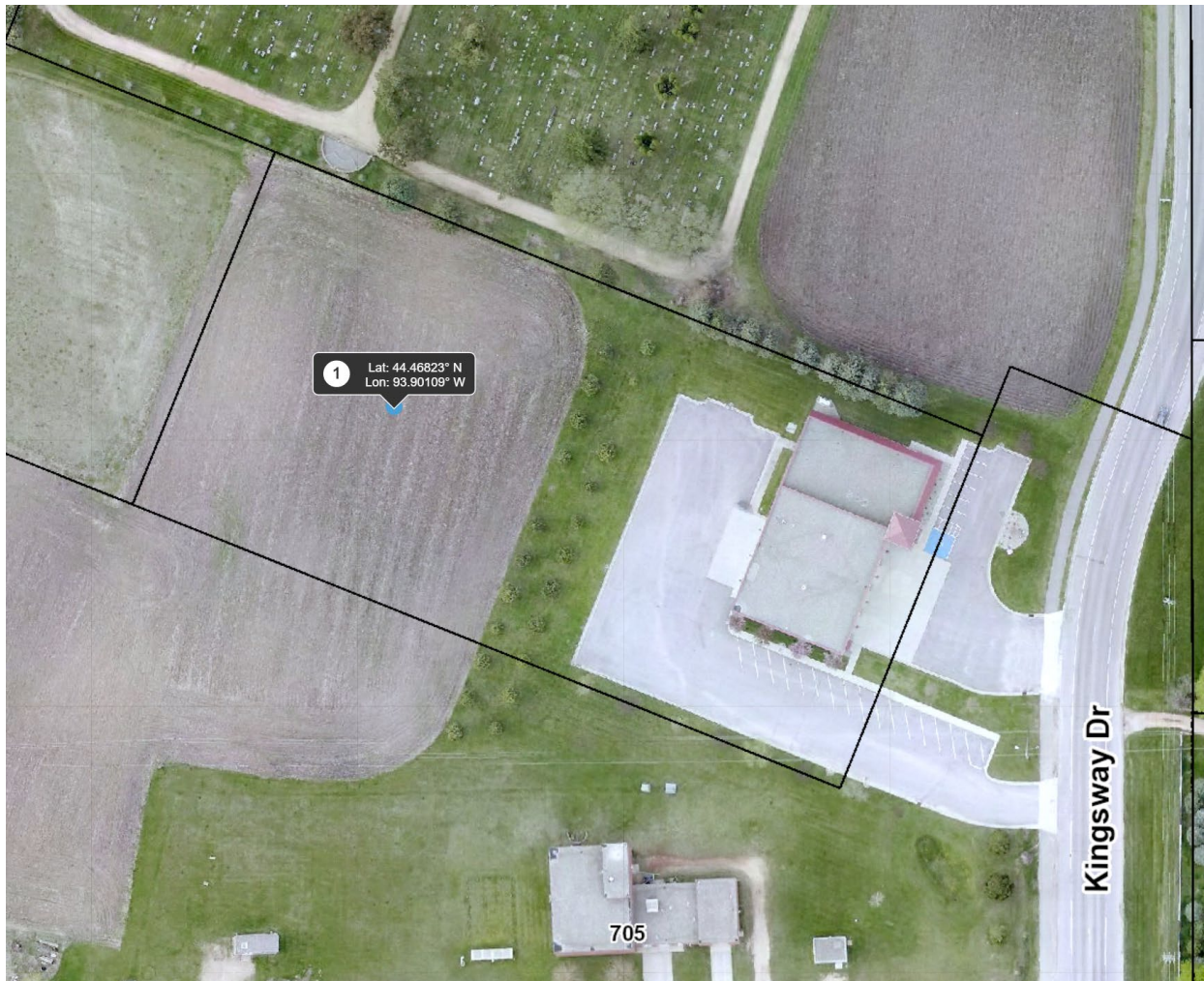
DATE: For the City Council Meeting of Monday July 8th, 2019

PURPOSE

Consider approving Resolution R2019-XXX.

SUMMARY

Minnesota Municipal Power Agency (MMPA) would like the City to cooperate in the relocation of the MMPA wind turbine currently located south of the City off of Highway 112. Staff and Councilmember Krogmann have reviewed potential sites throughout the City. Through review of the potential sites with fellow staff and consultants, we are recommending to MMPA the site below that is currently addressed as 950 Kingsway Drive, with the understanding the relocation costs will be paid by MMPA.



ACTION REQUESTED

Staff is requesting that the City Council approve Resolution R2019-XXX to document the City's desire to collaborate with MMPA on the relocation of a wind turbine.

CITY OF LE SUEUR, MINNESOTA
CITY COUNCIL RESOLUTION **R2019-XXX**
MMPA Wind Turbine Location

WHEREAS, The City of Le Sueur (the "City") desires to work with Minnesota Municipal Power Agency ("MMPA") to relocate the MMPA wind turbine currently located off of Highway 112 south of the City to a location within the City limits.

Whereas, a location within the City on City owned land currently addressed as 950 Kingsway Drive, Le Sueur, MN 56058; is available, and

WHEREAS, MMPA desires to work with the City to locate the wind turbine within the City at MMPA expense.

NOW, THEREFORE, BE IT RESOLVED BY THE MAYOR AND CITY COUNCIL THAT:

The City of Le Sueur's intent is to work with MMPA to have the relocated wind turbine installed on City owned land currently addressed as 950 Kingsway Drive, Le Sueur, with the cost of relocation paid by MMPA.

PASSED by the City Council of the City of Le Sueur on this 8th day of July 2019.

ATTEST

Mayor

City Clerk

VOTE: ___ HAGG ___ FAVOLISE ___ HUNTINGTON ___ KIRBY
___ KROGMANN ___ ROHLOFF ___ SULLIVAN